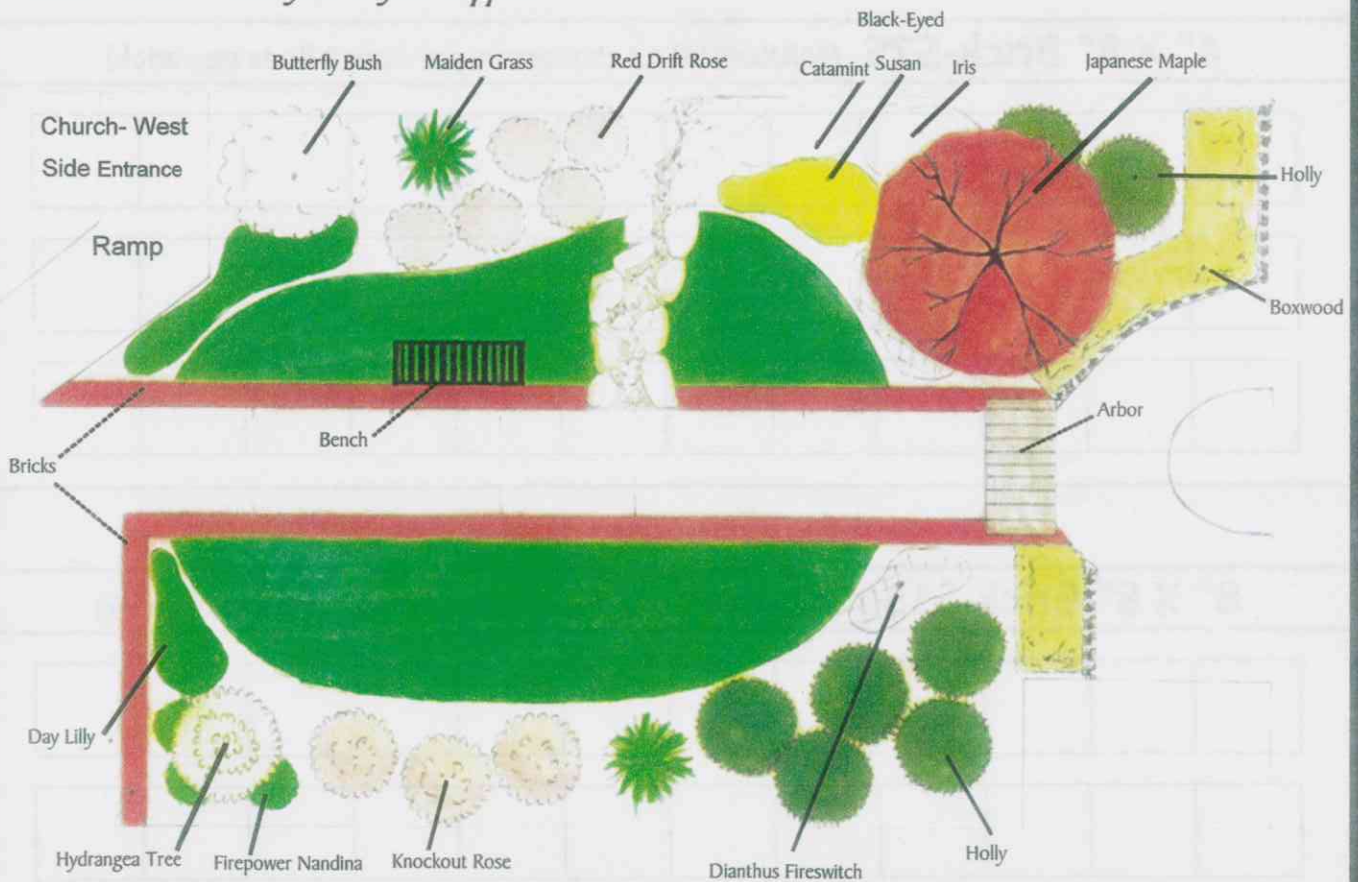


Sacred Heart Remembrance Garden...

Sacred Heart will be accepting donations for engraved bricks to border the sidewalk in our planned Garden between the Church and School. See Landscape Plan below. You may donate in your name or memorialize a special person(s). For a donation of \$75 a 4" X 8" brick would be inscribed with a maximum of 12 characters per line and with a maximum of 3 lines per brick or for a donation of \$150 an 8" X 8" brick would also allow 12 characters per line with a maximum of 6 lines per brick.

Please fill-out the order form on the other side and submit with your donation to Kelly Paxton at the church office. Thank you for your support!



4" X 8" Bricks



8" X 8" Bricks



PLEASE NOTE: If the name(s) or wording contains multiple **A's**, **M's**, **W's** or **Y's** one space on that particular line must be sacrificed to compensate for the added space required by those larger letters. Punctuation marks, hyphens, quotations and spaces between words must be counted as one complete space. Periods and commas must also be counted as a complete space. The **&** will be used in place of the word **"AND."**

Please print your information on the form below. Each letter or punctuation mark you wish to appear on the brick must fit inside one of the boxes.

DONOR NAME

4" X 8" Brick-\$75 (MAXIMUM 12 characters per line; 3 lines per brick)											

8" X 8" Brick-\$150 (MAXIMUM 12 characters per line; 6 lines per brick)											

Please submit the completed form along with your donation to Kelly Paxton at the church office.